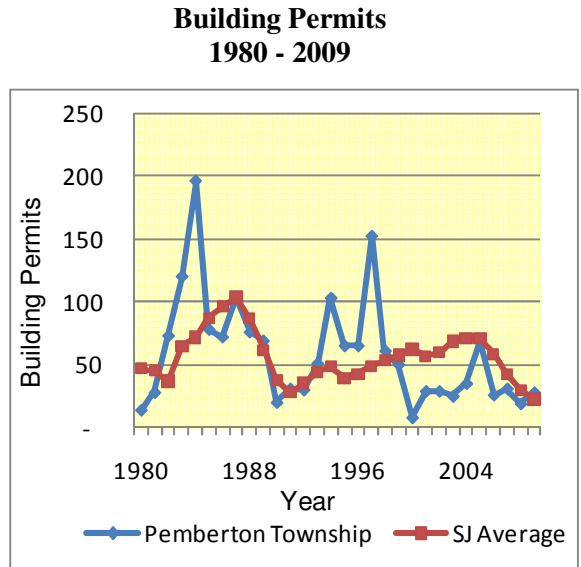
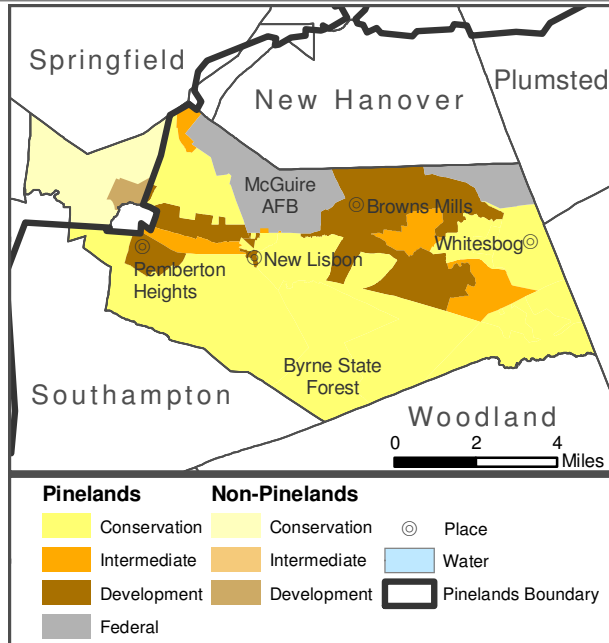


# Pemberton Township, Burlington County

% Population in Pinelands Area: 98% (28,127 residents / 28,691 total)

% of Housing Units in Pinelands Area: 98% (10,538 units / 10,778 total)

% Land in Pinelands Area: 90% (36,722 acres / 40,634 total)



Preserv	Forest	Ag Prod	Special Ag Prod	Rural Dev	Regional Growth	Pine Town	Pine Village	Military & Federal	
20%	15%	25%	3%	7%	18%			12%	
				Municipal Value	South Jersey Municipal Avg	South Jersey Municipal Rank			
Population Estimate 2009				29,986	11,978	24			
Population Density 2009 (per sq mile)				453.8	2,020.5	143			
Population Change 1999 – 2009				-4.0%	7.0%	180			
Land Area (sq miles) 2000				63.0	17.8	14			
% Land State-Owned Open Space 2009				19.2%	8.4%	32			
Assessed Acres of Farmland 2008				10,439	2,303	12			
<b>Building Permits 2009</b>				28	22	46			
Residential Housing Transactions 2009				9	25.6	182			
Median Sale Price of Homes 2009				\$186,433	\$226,800	142			
Equalized Value of Property 2009(Million\$)				\$1,635.7	\$1,685.5	57			
Effective Tax Rate 2009				1.81	2.02	130			
Average Residential Property Tax Bill 2009				\$3,359	\$5,195.5	188			
Per Capita Income 2000 (in 2000 Dollars)				\$19,238	\$23,813	148			
Unemployment Rate 2009				10.5%	10.0	79			
Establishments 2002	Agric	Mining	Constru	Manufac	Wholsal & Retail	Utils & Trans	Services	Public	UnClass
200	3%		11%	2%	20%	1%	49%	11%	5%
Assessment Class Proportions in Municipal Valuations 2006			Vacant	Residential	Agricultural	Commercial	Industrial	Apartment	
			2%	88%	2%	6%	<1%	2%	